



Operational Services and Systems (Aust.) Pty. Ltd.

ACN 063 244 002
ABN 89 480 947 191

23-25 Davies Street
Rosanna 3084
Australia

Tel (03) 9459 1884
Fax (03) 9459 9407
International +61 +3
Email: info@oss.net.au

BOS Portal Automatic Import for

System One

This document will enable venues to import soft meters from the Intralot BOS Portal and assist them in downloading the five Excel files that are required being Turnover, Money In, Money Out, Games Played and Jackpot Wins.

*****Ensure VPN is Open*****

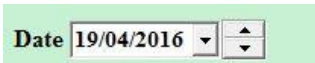
*****Will not work on Windows XP or below*****

1. Login to **System One.**

2. Click on Input Data up the top.



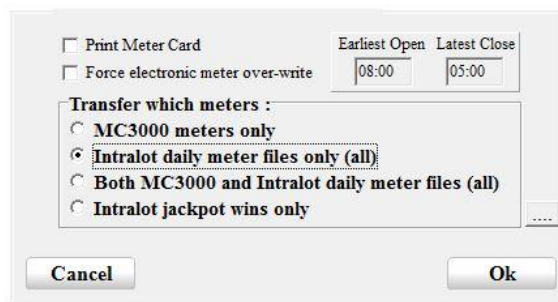
3. Pick the required Date.



4. Click Transfer.

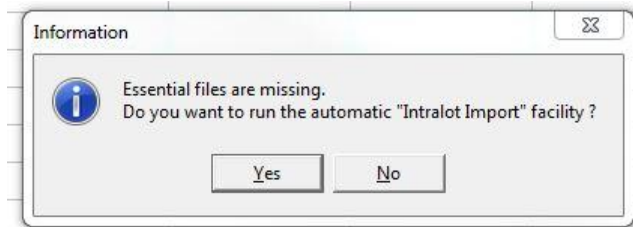


5. Pick ether Intralot daily meters only (all) or Both MC3000 and Intralot daily Meters files (all), Press OK.

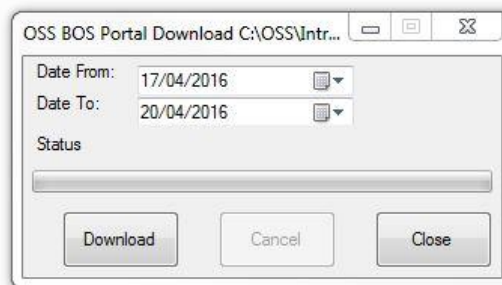


***Please note when selecting Both MC3000 and Intralot daily Meters files (all) the MC3000 will transfer first then Step 6 will occur.**

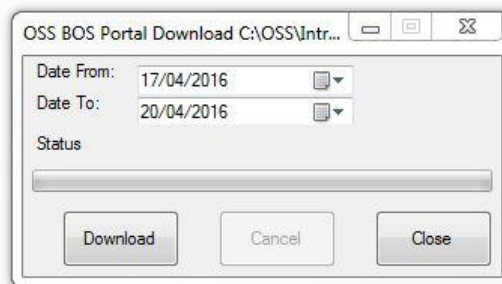
6. **System One** will then ask if you would like to run the “Intralot Import” Facility, select Yes.



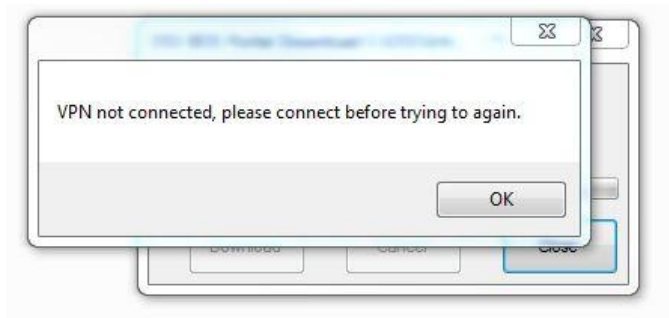
7. **System One** will then Minimise temporarily and the OSS BOS Portal Download will launch.



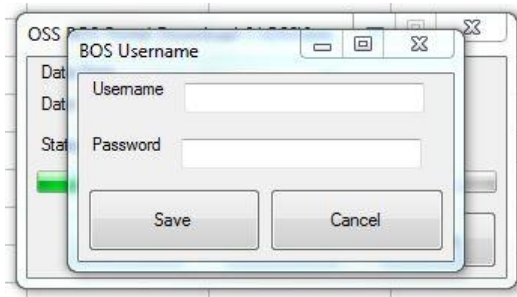
8. Select Download.



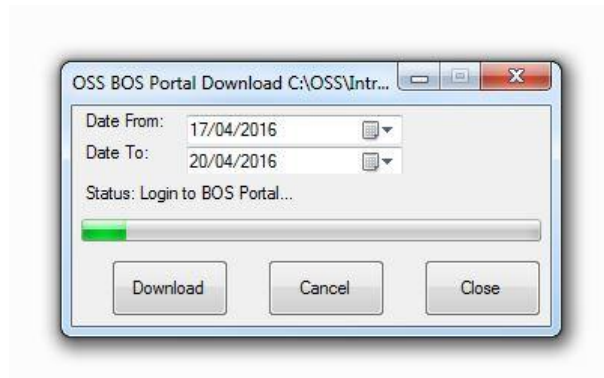
9.  Ensure VPN is Open otherwise this will appear.



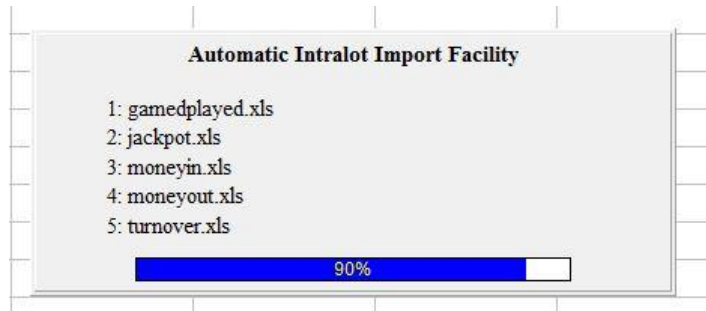
10. The first time the program is run it will request the BOS portal login and password. Enter details and press save.



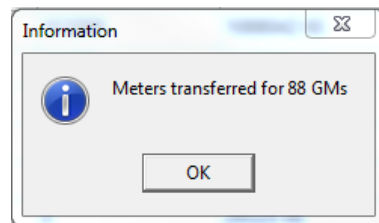
11. A progress bar will appear and update as each file is downloaded for you, the data can take on average 1 to 2 minutes to save all required files.



12. **System One** will re-launch and automatically import the Intralot files once they have been downloaded.



13. **System One** will then display this image (depending on the number of EGM's the Venue has).



****Click on the  down on the system tray if the above message does not show.**

14. All meters are now downloaded.

Congratulations you have successfully exported the soft meter reads from Intralot and imported soft meter reads into **System One**.

IMPORTANT NOTE:

Please note that you are still required to manually read all hard meters on each EGM at least once a week and on the last day of the month.

Any questions please call the **System One** Help Line on 1300 130 541.